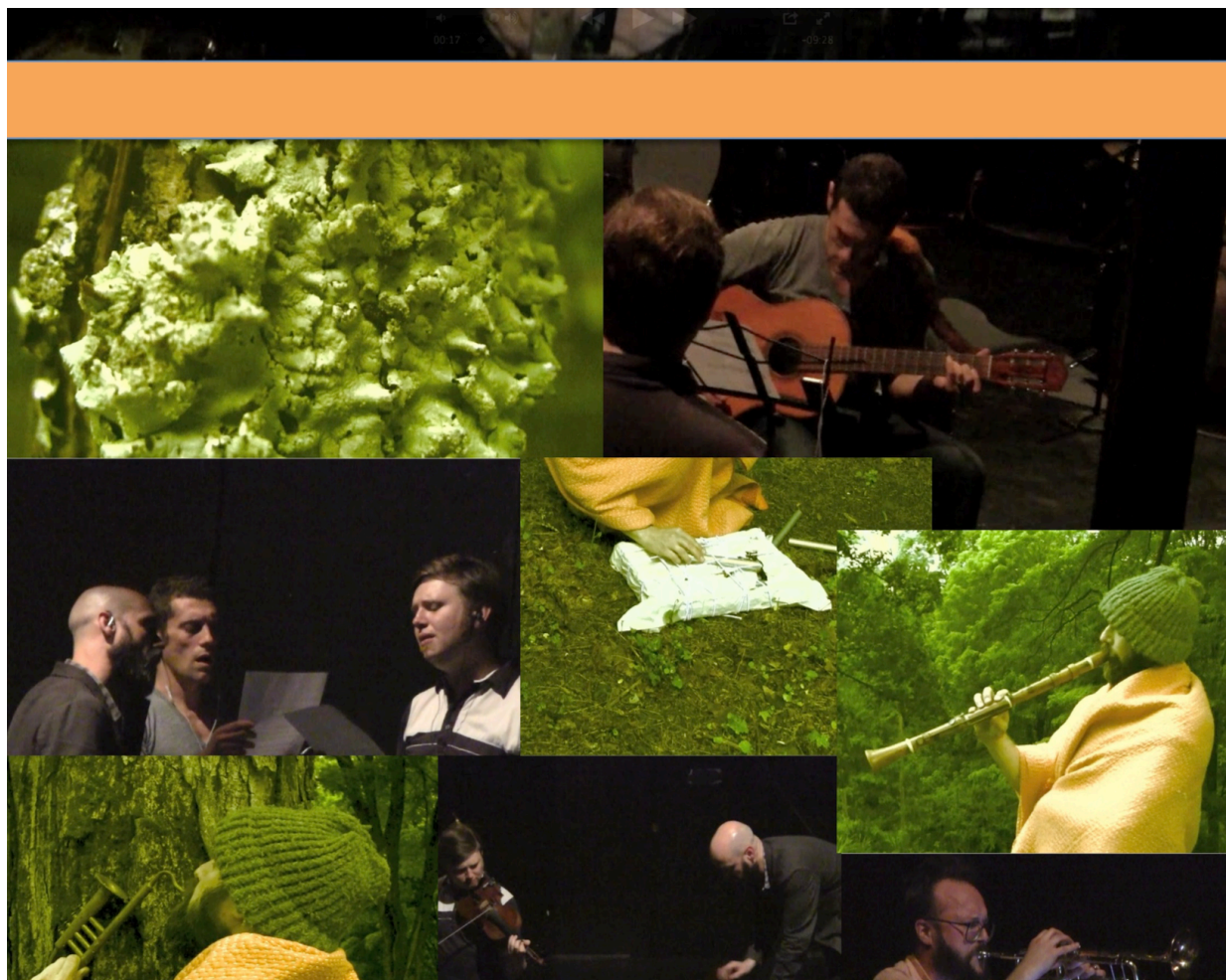


# OZET

***[The] servant  
(cleaning up in the next room)  
cannot make music.***

May 2013



[The] servant (cleaning up in the next room) cannot make music.

ONE

**[0:00-4:00]**

**E and G**

Aaron plays ChimeBox, lifted and dropped to be like a percussion instrument

LoudSpeaker 1: ONE\_1 + Cannot\_Make\_Music-ONE-EG\_Left

LoudSpeaker 2: ONE\_2 + Cannot\_Make\_Music-ONE-EG\_Right

Daniel sings with his iPod: **Cannot\_Make\_Music-ONE\_vox1.mp3**

Scott and Sean slowly walk to their seats over this time

TWO - "The superman is a premature ideal, one that presupposes man."

**[4:00-8:00]**

**F and A**

Guitar and Mandolin Duet:

Scott and Sean face each other with audience to the side

Guitar is acoustic, Mandolin is processed

LoudSpeaker 1: TWO\_1

LoudSpeaker 2: TWO\_2

Daniel and Aaron open ChimeBox and distribute to audience; drink Vodka

THREE

**[8:00-12:00]**

**E and G**

Daniel brings glasses of Vodka to Scott and Sean

Daniel, Scott, Sean stand and circle the Lamp and hum THREE:chorale

(Each of them has their vocal part on their iPod and they listen and sing along with headphones)

Aaron plays trumpet solo and moves around LoudSpeaker

LoudSpeaker 1: THREE\_1

LoudSpeaker 2: THREE\_2

FOUR

**[12:00-16:00]**

**E and G**

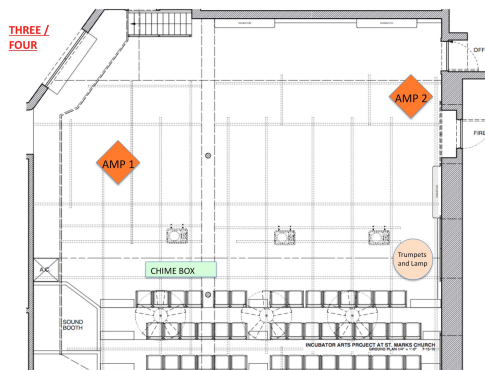
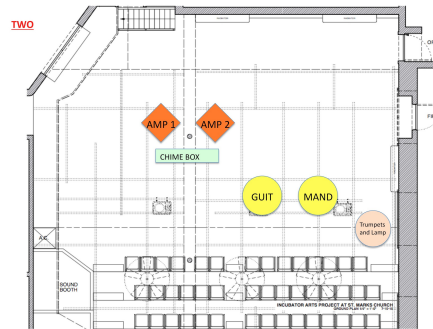
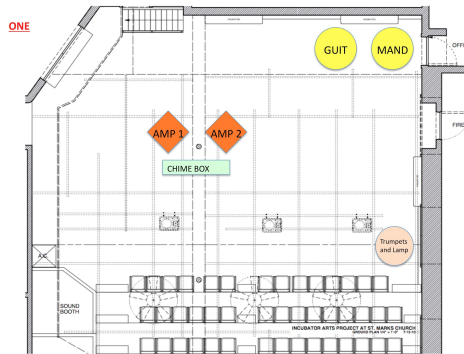
LoudSpeaker 1: FOUR\_1 (beat)

LoudSpeaker 2: FOUR\_2 (pitches)

Aaron, Sean, Daniel sing percussive parts and play the pitches at the new LoudSpeaker 2 location.

Scott rubs remaining chime with key at the new ChimeBox location. (Audience can join if they want.)

## MOVEMENT CHARTS:



*[The] servant (cleaning up in the next room) cannot make music.*

an OZET piece

ONE

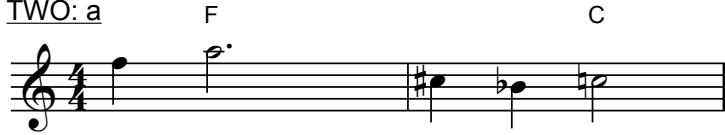
*each measure is approximately 5.75 seconds*



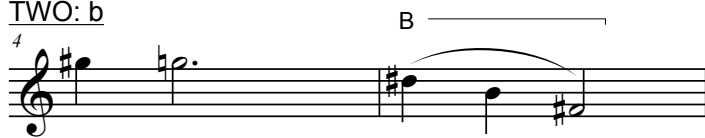
*[The] servant (cleaning up in the next room) cannot make music.*

an OZET piece

TWO: a



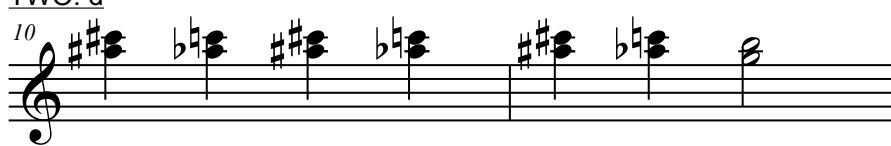
TWO: b



TWO: c



TWO: d



TWO: e



*[The] servant (cleaning up in the next room) cannot make music.*

THREE

an OZET piece

*each performers iPod plays the line they sing;  
each measure is about 5 seconds long;  
the vocal chorale starts after about 20 seconds*

drums      listen for pitches      sing

DB  
SH  
SB

12

12  
12  
12

19

19  
19  
19